



Advocacy Tips

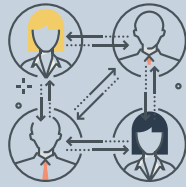
*The most effective lobbyists are active, trustworthy local officials and constituents who understand **local** issues.*

Building Legislative Relationships

The best time to build a relationship with your legislator is when you don't need something.

Your legislators serve the same constituency you do; **invite them to county events** and help them get positive publicity.

Legislators must learn complicated information quickly - help them by **providing details on important county issues** before they must make a decision about it at the legislature.



Thank them—sincerely and often! Your appreciation goes a long way.



Testifying Effectively

Committee hearings provide an opportunity to **advocate your position** on an issue publicly, in addition to your behind-the-scenes meetings with legislators.

When testifying in a committee:

- Arrive early and sign in at an electronic kiosk outside the committee room.
- Feel free to greet committee members ahead of time.
- Be prepared - organize your thoughts beforehand, write them down and bring them with you.
- Just like in county hearings, direct your comments through the chairman to a member of the committee.
- Keep your statement brief and to the point.
- Focus on the impact to your constituents.
- Thank the committee for their time.

Lobbying Effectively



- 1 Keep it **simple and succinct**.
- 2 **Be specific** - identify your subject matter clearly and concisely, including the bill number, and let your legislator know your position on the legislation.
- 3 Focus on the **impact to your constituents** and on the legislator's particular needs and interests.
- 4 Do not assume legislators and their staff understand your issue - legislators must juggle numerous topics, so it is important you **explain your issue clearly** - and sometimes often.
- 5 Never be afraid to admit you do not know the answer to a question - it is better to **follow up with information later** than to give an erroneous answer.
- 6 Ask the elected official for their position on the issue.
- 7 **Express gratitude** for the times your legislator has advocated your position on an issue of importance to you.
- 8 Follow up with a thank you note or e-mail restating your position.

Communicating & Writing Effectively

Your e-mail or letter should be short and to the point:

- Clearly state your purpose for writing, **include the action** you are asking the legislator to take and why it matters to you.
- Outline one or two critical points; use facts, figures and stories to **illustrate how the issue impacts you or your constituents**.
- **Ask the legislator to support your position** on the issue. Thank them for their consideration and include your contact information.



Online Tools

www.azleg.gov

Find an Agenda: Committee agendas are listed under the "Committees" tab on the legislative website. They are further divided into committees and hearing dates.

Find a Bill: If you know the bill number, simply look it up in the box in the top right corner of the legislature's website. To search for a bill, use the "Bills" tab of the website, which will allow you to search by a keyword or sponsor name.

Watch Online: Legislative proceedings can be viewed online, either live or through archives, at www.azleg.gov.

Watch In-person: Anyone can watch floor proceedings from the House and Senate galleries, as long as they follow posted rules and restrictions.

Participate Online: At www.azleg.gov, the Request to Speak (RTS) feature allows you to express your position on a bill even if you can't attend the hearing. Indicate your position and note that you do not wish to speak.

Visit www.countysupervisors.org for additional advocacy tools, resources and information including:

- Request to Speak system tutorial
- CSA Advocacy Toolkit
- Legislative District maps

Contact information for all legislators is available at www.azleg.gov

Contact CSA at 602-252-5521 if you are not yet registered in the legislative system.



Advocacy Tips

The most effective lobbyists are active, trustworthy local officials and constituents who understand local issues.

Understanding the Legislative Environment



Often behind-the-scenes activities at the legislature can shape what happens during your interaction with legislators. It is important to remember:

- Your legislator is dealing with many issues and **may need to be reminded of the issues** that are important to your county. This does not mean they do not care about your priorities.
- The **budget factors into nearly every decision** made by legislators and can be a source of stress and conflict. Keep this in mind when you discuss anything money-related with your legislators.
- Legislators share a very small staff and they have very busy schedules that can change at a moment's notice.
- There are **countless demands on legislators' time**; show up on time for meetings, exercise patience and understand that waiting is part of the process.

House Information Number
(602) 926-4221

Senate Information Number
(602) 926-3559

Glossary of Legislative Terms

Ballot Initiatives and Referenda - Both methods to put an issue before voters at an election. An initiative is circulated by citizens, who must collect a specified number of signatures; a referendum is passed through the legislative process directly from the legislature to the ballot.

Caucus - Meeting of all the members of one political party or affiliated group (i.e.: Republican Caucus or Hispanic Caucus).

COW - Committee of the Whole, when bills are debated, and possibly amended, by the full house or senate chamber.

Fiscal Note - A written estimate of the fiscal impact of a bill, as prepared by the JLBC staff.

JLBC - The Joint Legislative Budget Committee, a legislative committee whose staff is responsible for providing information and recommendations on the state budget, state revenues and expenditures, future needs and the organization and functions of state government.

Legislative Council - A legislative committee whose nonpartisan staff is responsible for bill drafting, research and administrative services to the legislature.

Reads - First, second and third reads are stages of the legislative process, where a piece of legislation is presented to the members of either chamber. During third read, the full chamber votes on a final version of a bill.

Reconsideration - A parliamentary process that allows a proposal to be brought back before the legislative body after it has previously failed to pass.

Short Title - The title of a bill, given by Legislative Council, that reflects the basic purpose of the legislation.

Sine Die - Latin for "without (a fixed) day," which is used to describe the adjournment of a legislative session.

Sponsor - The legislator who introduces a bill.

Strike-everything Amendment - An amendment that replaces all the language contained in an underlying bill.

Structural Deficit - A budget deficit that results from a fundamental imbalance in government revenues and expenditures, as opposed to a deficit based on one-time budget variables or short-term factors that cause temporary budget deficits.

Vehicle Bill - A bill that is introduced with the intention of amending it with a strike-everything amendment.

Arizona State Legislature
57th Legislature, 1st Regular Session (2025)

State Senate



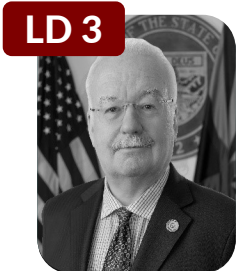
LD 1

Mark Finchem
Chair, Federalism
Member, Appropriations
Member, Judiciary/Elections



LD 2

Shawwna Bolick
Chair, Regulatory
Affairs/Government Reform
Member, Finance
Member, Judiciary/Elections



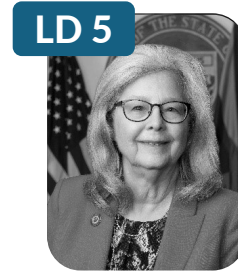
LD 3

John Kavanagh
Chair, Appropriations
Vice-Chair,
Judiciary/Elections
Member, Government



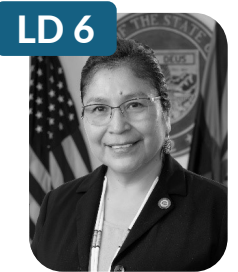
LD 4

Carine Werner
Chair, Health/Human
Services
Vice-Chair, Education
Member, Appropriations



LD 5

Lela Alston
Caucus Chair
Member, Rules
Member, Appropriations
Member, Public Safety



LD 6

Theresa Hatathlie
Member, Federalism
Member, Appropriations
Member,
Judiciary/Elections



LD 7

Wendy Rogers
Chair, Judiciary/Elections
Vice-Chair, Government
Member, Military
Affairs/Border Security



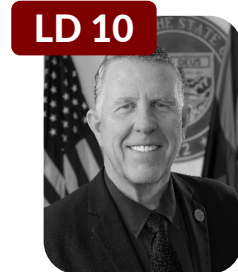
LD 8

Lauren Kuby
Member, Natural Resources
Member, Government
Member,
Judiciary/Elections



LD 9

Eva Burch
Member, Military
Affairs/Border Security
Member, Health/Human
Services
Member, Public Safety



LD 10

David Farnsworth
Chair, Education
Vice-Chair, Appropriations
Member, Government



LD 11

Catherine Miranda
Member, Rules
Member, Military
Affairs/Border Security
Member, Education



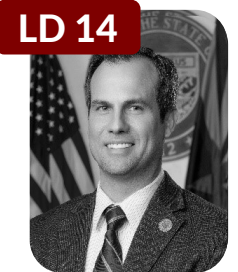
LD 12

Mitzi Epstein
Member, Finance
Member, Appropriations
Member, Regulatory
Affairs/Government Reform



LD 13

J.D. Mesnard
Chair, Finance
Member, Education



LD 14

Warren Petersen
Senate President
Chair, Rules



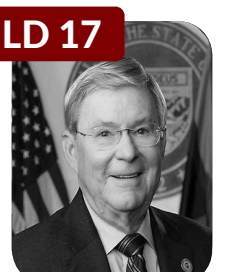
LD 15

Jake Hoffman
Chair, Government
Member, Finance



LD 16

T.J. Shope
President Pro Tempore
Chair, Natural Resources
Vice-Chair, Health/Human
Services
Member, Public Safety



LD 17

Vince Leach
Vice-Chair, Finance
Member, Appropriations
Member, Regulatory
Affairs/Government
Reform



LD 18

Priya Sundareshan
Democratic Leader
Member, Natural Resources
Member, Government



LD 19

David Gowan
Chair, Military
Affairs/Border Security
Member, Natural Resources
Member, Public Safety



LD 20

Sally Ann Gonzales
Member, Military
Affairs/Border Security
Member, Health/Human
Services

Arizona State Legislature
57th Legislature, 1st Regular Session (2025)

State Senate (2)

LD 21



Rosanna Gabaldón
Democratic Whip
Member, *Natural Resources*
Member, *Health/Human Services*
Member, *Public Safety*

LD 22



Eva Diaz
Member, *Federalism*
Member, *Government*
Member, *Education*

LD 23



Brian Fernandez
Member, *Finance*
Member, *Appropriations*
Member, *Regulatory Affairs/Government Reform*

LD 24



Analise Ortiz
Member, *Federalism*
Member, *Regulatory Affairs/Government Reform*
Member, *Judiciary/Elections*

LD 25



Tim Dunn
Vice-Chair, *Natural Resources*
Member, *Military Affairs/Border Security*
Member, *Education*

LD 26



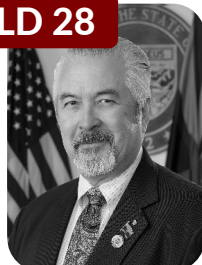
Flavio Bravo
Asst. Democratic Leader
Member, *Rules*
Member, *Finance*
Member, *Education*

LD 27



Kevin Payne
Chair, *Public Safety*
Member, *Federalism*
Member, *Regulatory Affairs/Government Reform*

LD 28



Frank Carroll
Majority Whip
Vice Chair, *Regulatory Affairs/Government Reform*
Member, *Rules*
Member, *Federalism*
Member, *Natural Resources*

LD 29



Janae Shamp
Majority Leader
Vice-Chair, *Rules*
Vice-Chair, *Military Affairs/Border Security*
Member, *Natural Resources*
Member, *Health/Human Services*

LD 30



Hildy Angius
Vice-Chair, *Federalism*
Vice-Chair, *Public Safety*
Member, *Appropriations*
Member, *Health/Human Services*

Arizona State Legislature

57th Legislature, 1st Regular Session (2025)

State House

 LD 1	 LD 1	 LD 2	 LD 2	 LD 3	 LD 3	 LD 4	 LD 4
Quang Nguyen Chair, Judiciary Member, Appropriations Member, Public Safety/Law Enforcement	Selina Bliss Chair, Health/Human Services Member, Judiciary Member, Transportation/ Infrastructure	Stephanie Simacek Member, Education Member, Public Safety/Law Enforcement	Justin Wilmeth Vice-Chair, Science/Technology Member, Commerce Member, International Trade	Joseph Chaplik Chair, Regulatory Oversight Member, Public Safety/Law Enforcement	Alexander Kolodin Vice-Chair, Regulatory Affairs Member, Federalism/Military Affairs/Elections Member, Judiciary Member, Public Safety	Matt Gress Chair, Education Vice-Chair, Appropriations Member, Health/Human Services	Pamela Carter Vice-Chair, Public Safety/Law Enforcement Member, Natural Resources/Energy/Water Member, Transportation/Infrastructur
 LD 5	 LD 5	 LD 6	 LD 6	 LD 7	 LD 7	 LD 8	 LD 8
Sarah Liguori Member, Health/Human Services Member, Natural Resources/Energy/Water Member, Science/Technology	Aaron Márquez Member, Federalism/Military Affairs/Elections Member, Government Member, Public Safety/Law Enforcement	Mae Peshlakai Member, Natural Resources/Energy/Water Member, Land/Agriculture/Rural Affairs	Myron Tsoies Member, Public Safety/Law Enforcement Member, Transportation/ Infrastructure	Walt Blackman Chair, Government Member, Appropriations Member, Commerce	David Marshall Chair, Public Safety/Law Enforcement Member, Education Member, Judiciary	Brian Garcia Member, Education Member, Federalism/Military Affairs/Elections Member, Judiciary	Janeen Connolly Member, Commerce Member, Science/Technology
 LD 9	 LD 9	 LD 10	 LD 10	 LD 11	 LD 11	 LD 12	 LD 12
Lorena Austin Member, Appropriations Member, Public Safety/Law Enforcement Member, International Trade	Seth Blattman Member, Appropriations Member, Ways/Means	Ralph Heap Vice-Chair, Health/Human Services Member, Natural Resources/Energy/Water Member, Science/Technology	Justin Olson Chair, Ways/Means Member, Appropriations Member, Education	Oscar De Los Santos Minority Leader Member, Rules	Junelle Cавero Member, International Trade Member, Science/Technology Member, Commerce	Stacey Travers Minority Whip Member, Appropriations Member, International Trade	Patricia Contreras Member, Health/Human Services Member, Natural Resources/Energy/Water Member, Transportation/Infrastructur
 LD 13	 LD 13	 LD 14	 LD 14	 LD 15	 LD 15	 LD 16	 LD 16
Julie Willoughby Majority Whip Member, Rules Member, Appropriations	Jeff Weninger Chair, Commerce Member, Appropriations Member, Health/Human Services Member, International Trade	Laurin Hendrix Chair, Rules Member, Commerce Member, International Trade Member, Science/Technology	Khyl Powell Vice-Chair, Judiciary Member, Federalism/Military Affairs/Elections Member, Public Safety/Law Enforcement	Neal Carter Speaker Pro Tempore Vice-Chair, Rules Member, Ways/Means	Michael Way Vice-Chair, Commerce Member, Appropriations Member, Judiciary	Teresa Martinez Vice-Chair, Transportation/ Infrastructure Member, Land/Agriculture/Rural Affairs Member, Natural Resources/Energy/Water	Chris Lopez Vice-Chair, Natural Resources/Energy/Water Member, Appropriations Member, Government Member, Health/Human Services

Arizona State Legislature

57th Legislature, 1st Regular Session (2025)

State House (2)



Rachel Keshel
Vice-Chair,
Federalism/Military
Affairs/Elections; Member,
Government; Member,
Public Safety/Law
Enforcement; Member,
Regulatory Oversight



Kevin Volk
Member,
Appropriations
Member, Public
Safety/
Law Enforcement



Nancy Gutierrez
Asst. Minority Leader
Member,
Appropriations
Member,
Education



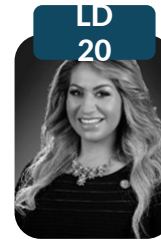
Christopher Mathis
Member, Rules
Member,
Natural
Resources/Energy/Water
Member, Health/Human
Services



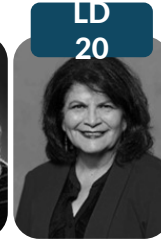
Gail Griffin
Chair, Natural
Resources/Energy/Water
Member,
Land/Agriculture/Rural
Affairs



Lupe Diaz
Chair, Land/
Agriculture/Rural
Affairs
Member,
Appropriations
Member, Commerce



Alma Hernandez
Member,
Health/Human Services
Member, Judiciary



Betty Villegas
Member,
Commerce
Member, Government



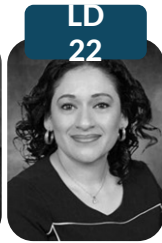
Consuelo Hernandez
Member, International
Trade
Member, Transportation
/Infrastructure; Member,
Regulatory Oversight



Stephanie Stahl-Hamilton
Member, Appropriations
Member, Government
Member,
Land/Agriculture/Rural
Affairs



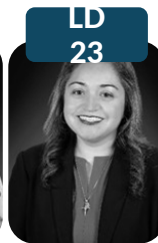
Lupe Contreras
Member, Rules
Member,
Regulatory Oversight
Member, Judiciary



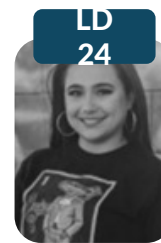
Elda Luna-Nájera
Member,
Health/Human Services
Member,
Ways/Means



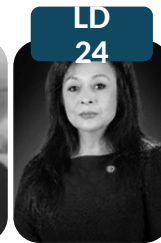
Michele Peña
Vice-Chair,
International Trade
Vice-Chair,
Land/Agriculture/Rural
Affairs
Member, Education



Mariana Sandoval
Chair, Federalism
Member,
Appropriations
Member,
Judiciary/Elections



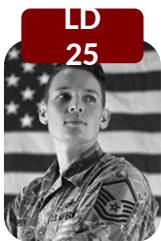
Anna Abeytia
Member,
Education
Member, Public
Safety/Law
Enforcement



Lydia Hernandez
Member,
Education
Member,
Federalism/Military
Affairs/Elections



Michael Carbone
Majority Leader
Member,
Rules
Member,
International Trade



Nick Kupper
Vice-Chair, Ways/Means
Member, Health/Human
Services
Member, Natural
Resources/Energy/Water



Cesar Aguilar
Member,
Commerce
Member,
Science/Technology



Quantá Crews
Minority Whip
Member,
Public Safety/Law
Enforcement
Member, Ways/Means



Lisa Fink
Vice-Chair, Government
Member,
Education
Member,
Science/Technology



Tony Rivero
Chair, International
Trade
Member,
Appropriations



David Livingston
Chair, Appropriations
Member,
Ways/Means



Beverly Pingerelli
Chair,
Science/Technology
Member,
Health/Human
Services



Steve Montenegro
Speaker
Member, Rules



James Taylor
Vice-Chair,
Health/Human Services
Member, Public
Safety/Law
Enforcement
Member, Ways/Means



Leo Biasiucci
Chair, Transportation
/Infrastructure
Member,
Education
Member,
Land/Agriculture/Rural
Affairs



John Gillette
Chair,
Federalism/Military
Affairs/Elections
Member,
Government
Member, Public
Safety/Law
Enforcement

Arizona State Legislature
57th Legislature, 1st Regular Session (2025)

Schedule

Senate Schedule

Monday	Tuesday	Wednesday	Thursday
1:00 P.M. Rules	1:15 P.M. Floor	9:00 A.M. Government	1:15 P.M. Floor
1:15 P.M. Floor	2:00 P.M. Appropriations Natural Resources	Health/Human Services Regulatory Affairs/Government Reform	
2:00 P.M. Federalism Finance Military Affairs/Border Security		1:15 P.M. Floor 2:00 P.M. Education Judiciary/Elections Public Safety	

House Schedule

Monday	Tuesday	Wednesday	Thursday
10:00 A.M. Caucus	1:15 P.M. Floor	9:00 A.M. Government	10:00 A.M. Floor
1:00 P.M. Rules	2:00 P.M. Commerce Education Natural Resources/ Energy/Water Regulatory Oversight	International Trade Judiciary Ways/Means	
1:15 P.M. Floor		1:15 P.M. Floor 2:00 P.M. Appropriations Federalism/Military Affairs/Elections Science/Technology Transportation/ Infrastructure	
2:00 P.M. Health/Human Services Land/Agriculture/ Rural Affairs Public Safety/ Law Enforcement			

Arizona State Legislature
57th Legislature, 1st Regular Session (2025)
Legislator-County Crosswalk

Apache County

LD 6

Senator Theresa Hatathlie
Representative Myron Tsosie
Representative Mae Peshlakai

Cochise County

LD 19

Senator David Gowan
Representative Gail Griffin
Representative Lupe Diaz

LD 21

Senator Rosanna Gabaldón
Representative Consuelo Hernandez
Representative Stephanie Stahl-Hamilton

Coconino County

LD 6

Senator Theresa Hatathlie
Representative Myron Tsosie
Representative Mae Peshlakai

LD 7

Senator Wendy Rogers
Representative David Marshall
Representative Walt Blackman

Gila County

LD 6

Senator Theresa Hatathlie
Representative Myron Tsosie
Representative Mae Peshlakai

LD 7

Senator Wendy Rogers
Representative David Marshall
Representative Walt Blackman

Graham County

LD 6

Senator Theresa Hatathlie
Representative Myron Tsosie
Representative Mae Peshlakai

LD 19

Senator David Gowan
Representative Gail Griffin
Representative Lupe Diaz

Greenlee County

LD 19

Senator David Gowan
Representative Gail Griffin
Representative Lupe Diaz

La Paz County

LD 30

Senator Hildy Angius
Representative Leo Biasiucci
Representative John Gillette

Mohave County

LD 6

Senator Theresa Hatathlie
Representative Myron Tsosie
Representative Mae Peshlakai

LD 30

Senator Hildy Angius
Representative Leo Biasiucci
Representative John Gillette

Maricopa County

LD 2

Senator Shawna Bolick
Representative Justin Wilmeth
Representative Stephanie Simacek

LD 3

Senator John Kavanagh
Representative Joe Chaplik
Representative Alex Kolodin

LD 4

Senator Carine Werner
Representative Matt Gress
Representative Pamela Carter

LD 5

Senator Lela Alston
Representative Aaron Márquez
Representative Sarah Liguori

LD 8

Senator Lauren Kubly
Representative Brian Garcia
Representative Janeen Connolly

LD 9

Senator Eva Burch
Representative Lorena Austin
Representative Seth Blattman

LD 10

Senator David Farnsworth
Representative Ralph Heap
Representative Justin Olson

LD 11

Senator Catherine Miranda
Representative Oscar De Los Santos
Representative Junelle Cavero

Maricopa County (*continued*)

LD 12

Senator Mitzi Epstein
Representative Stacey Travers
Representative Patricia Contreras

LD 14

Senator Warren Petersen
Representative Laurin Hendrix
Representative Khyll Powell

LD 16

Senator T.J. Shope
Representative Teresa Martinez
Representative Chris Lopez

LD 23

Senator Brian Fernandez
Representative Michele Peña
Representative Mariana Sandoval

LD 25

Senator Tim Dunn
Representative Michael Carbone
Representative Nick Kupper

LD 27

Senator Kevin Payne
Representative Lisa Fink
Representative Tony Rivero

LD 29

Senator Janae Shamp
Representative Steve Montenegro
Representative James Taylor

LD 13

Senator J.D. Mesnard
Representative Julie Willoughby
Representative Jeff Weninger

LD 15

Senator Jake Hoffman
Representative Neal Carter
Representative Michael Way

LD 22

Senator Eva Diaz
Representative Lupe Contreras
Representative Elda Luna-Nájera

LD 24

Senator Analise Ortiz
Representative Anna Abeytia
Representative Lydia Hernandez

LD 26

Senator Flavio Bravo
Representative Cesar Aguilar
Representative Quantá Crews

LD 28

Senator Frank Carroll
Representative David Livingston
Representative Beverly Pingerelli

LD 30

Senator Hildy Angius
Representative Leo Biasiucci
Representative John Gillette

Navajo County

LD 6

Senator Theresa Hatathlie
Representative Myron Tsosie
Representative Mae Peshlakai

LD 7

Senator Wendy Rogers
Representative David Marshall
Representative Walt Blackman

Pima County

LD 16

Senator T.J. Shope
Representative Teresa Martinez
Representative Chris Lopez

LD 18

Senator Priya Sundareshan
Representative Nancy Gutierrez
Representative Chris Mathis

LD 20

Senator Sally Ann Gonzales
Representative Alma Hernandez
Representative Betty Villegas

LD 23

Senator Brian Fernandez
Representative Michele Peña
Representative Mariana Sandoval

LD 17

Senator Vince Leach
Representative Rachel Keshel
Representative Kevin Volk

LD 19

Senator David Gowan
Representative Gail Griffin
Representative Lupe Diaz

LD 21

Senator Rosanna Gabaldón
Representative Consuelo Hernandez
Representative Stephanie Stahl-Hamilton

Pinal County

LD 6

Senator Theresa Hatathlie
Representative Myron Tsosie
Representative Mae Peshlakai

LD 15

Senator Jake Hoffman
Representative Neal Carter
Representative Michael Way

LD 17

Senator Vince Leach
Representative Rachel Keshel
Representative Kevin Volk

LD 7

Senator Wendy Rogers
Representative David Marshall
Representative Walt Blackman

LD 16

Senator T.J. Shope
Representative Teresa Martinez
Representative Chris Lopez

LD 23

Senator Brian Fernandez
Representative Michele Peña
Representative Mariana Sandoval

Santa Cruz County

LD 19

Senator David Gowan
Representative Gail Griffin
Representative Lupe Diaz

LD 21

Senator Rosanna Gabaldón
Representative Consuelo Hernandez
Representative Stephanie Stahl-Hamilton

Yavapai County

LD 1

Senator Mark Finchem
Representative Quang Nguyen
Representative Selina Bliss

Yuma County

LD 23

Senator Brian Fernandez
Representative Michele Peña
Representative Mariana Sandoval

LD 25

Senator Tim Dunn
Representative Michael Carbone
Representative Nick Kupper

ARIZONA TRIBAL LEADERSHIP LIST

Ak-Chin Indian Community

Robert Miguel, Chairman
Lemuel Vincent, Vice Chairman
42507 W. Peters & Nall Road
Maricopa, AZ 85138
P (520) 568-1000
F (520) 568-1001

Cocopah Indian Tribe

Sherry Cordova, Chairwoman
Neil White, Vice Chairman
14515 S. Veterans Dr.
Somerton, AZ 85350
P (928) 627-2061
F (928) 627-3173

Colorado River Indian Tribes

Amelia Flores, Chairwoman
Dwight Lomayesva, Vice Chairman
26600 Mohave Rd.
Parker, AZ 85344
P (928) 669-1280
F (928) 669-1391

Fort McDowell Yavapai Nation

Sandra Pattea, President
Paul Russell, Vice President
PO Box 17779
Fountain Hills, AZ 85269
P (480) 789-7000
F (480) 837-1630

Fort Mojave Indian Tribe

Timothy Williams, Chairman
Shan Lewis, Vice Chairman
500 Merriman Avenue
Needles, CA 92363
P (760) 629-4591
F (760) 629-5767

Fort Yuma Quechan Tribe

Jordan Joaquin, President
Virgil Smith, Vice President
PO Box 1899
Yuma, AZ 85366
P (760) 572-0213
F (760) 572-2102

Gila River Indian Community

Stephen R. Lewis, Governor
Regina Antone, Lt. Governor
PO Box 97
Sacaton, AZ 85247
P (520) 562-9841
F (520) 562-9849

Havasupai Tribe

Bernadine Jones, Chairwoman
Armando Marshall, Vice Chairman
PO Box 10
Supai, AZ 86435
P (928) 448-2731
F (928) 448-2551

Hopi Tribe

Timothy Nuvangyaoma, Chairman
Craig Andrews, Vice Chairman
PO Box 123
Kykotsmovi, AZ 86039
P (928) 734-2441
F (928) 734-3139

Hualapai Tribe

Duane Clarke, Chairman
Ronald Quasula, Sr., Vice Chairman
PO Box 179
Peach Springs, AZ 86434
P (928) 769-2216
F (928) 769-2343

Kaibab Band of Paiutes

Roland Maldonado, Chairman
Carmen Bradley, Vice Chairwoman
Tribal Affairs Bldg., #1 N. Pipe Spring Rd.
Fredonia, AZ 86022
P (928) 643-7245
F (928) 643-7260

Navajo Nation

Buu Nygren, President
Richelle Montoya, Vice President
PO Box 9000
Window Rock, AZ 86515
P (928) 871-7000
F (928) 871-4025

Pascua Yaqui Tribe

Julian Hernandez, Chairman
Peter Yucupicio, Vice Chairman
7474 S. Camino de Oeste
Tucson, AZ 85757
P (520) 883-5000
F (520) 883-5014

Pueblo of Zuni

Arden Kucate, Governor
Cordelia Hooee, Lt. Governor
PO Box 339
Zuni, NM 87327
P (505) 782-7000
F (505) 782-7202

Salt River Pima-Maricopa Indian Community

Martin Harvier, Sr., President
Ricardo Leonard, Vice President
10005 E. Osborn Road
Scottsdale, AZ 85256
P (480) 362-7400
F (480) 362-7575

San Carlos Apache Tribe

Terry Rambler, Chairman
Tao Etpison, Vice Chairman
PO Box 0
San Carlos, AZ 85550
P (928) 475-2361
F (928) 475-2567

San Juan Southern Paiute

Robbin Preston, Jr., President
Johnny Lehi, Jr., Vice President
PO Box 1989
Tuba City, AZ 86045
P (928) 283-1066
F (928) 674-9714

Tohono O'odham Nation

Verlon Jose, Chairman
Carla Johnson, Vice Chairwoman
PO Box 837
Sells, AZ 85634
P (520) 383-2028
F (520) 383-3379

Tonto Apache Tribe

Calvin Johnson, Chairman
Charles Lopez, Vice Chairman
Tonto Apache Reservation #30
Payson, AZ 85541
P (928) 474-5000
F (928) 474-9125

White Mountain Apache Tribe

Kasey Velasquez, Chairman
Jerome Kasey, III, Vice Chairman
PO Box 700
Whiteriver, AZ 85941
P (928) 338-2500
F (928) 338-1514

Yavapai Apache Nation

Tanya Lewis, Chairwoman
Richard Pacheco, Vice Chairman
2400 W. Datsi St.
Camp Verde, AZ 86322
P (928) 567-3649
F (928) 567-3994

Yavapai Prescott Indian Tribe

Robert Ogo, President
Calvin Hunter, Jr., Vice President
530 E. Merritt Street
Prescott, AZ 86301
P (928) 445-8790
F (928) 778-9445



NACo Board of Directors 2023-24

Rudy Molera, Santa Cruz County
Member, Board of Directors
Brad Carlyon, Navajo County
Member, Board of Directors
Lena Fowler, Coconino County
At Large Director

Western Interstate Region

Woody Cline, Gila County
Member, Board of Directors
Patrice Horstman, Coconino County
Member, Board of Directors
Craig Sullivan, CSA - *Ex-Officio*
Jennifer Marson, AACo - *Ex-Officio*

Caucuses

Large Urban County Caucus

Jack Sellers, Maricopa County, Vice Chair
Steve Gallardo, Maricopa County
Aaron Flannery, Maricopa County

Rural Action Caucus

Lena Fowler, Coconino County, Vice Chair
Alton Shepherd, Apache County
Paul R. David, Graham County
Rudy Molera, Santa Cruz County

NACo Steering Committees

Agriculture & Rural Affairs

Ron Campbell, Greenlee County
Lynne Pancrazi, Yuma County
Martin Porchas, Yuma County
Catherine Traywick, Cochise County

Human Services & Education

Judy Begay, Coconino County
Dawnafe Whitesinger, Navajo County
Dustin Williams, Pima County

Community, Economic & Workforce Development

Lena Fowler, Coconino County, Vice Chair
Steve Gallardo, Maricopa County
Workforce Development Subcomm., Vice Chair
Rudy Molera, Santa Cruz County
Economic Development Subcomm., Vice Chair
Joe Shirley, Jr. Apache County
David Gomez, Greenlee County
Camila Rochin, Cochise County

Justice & Public Safety

Jay Yellowhorse, Apache County
Scott Adams, Greenlee County
Bradley Carlyon, Navajo County
David Clouse, Navajo County
Kevin Cavanaugh, Pinal County
Donna McQuality, Yavapai County

Environment, Energy & Land Use

Peggy Judd, Cochise County
Paul R. David, Graham

Public Lands

Patrice Horstman, Coconino County
Outdoor Recreation Subcomm., Vice Chair
Nelson Davis, Apache County
Woody Cline, Gila County
Richard Lunt, Greenlee County
Buster Johnson, Mohave County
Jason Whiting, Navajo County
James Gregory, Yavapai County
Tim Carter, Yavapai County

Finance, Pensions & Intergovernmental Affairs

Aaron Flannery, Maricopa County
Elections Subcomm., Vice Chair
Sarah Benatar, Coconino County
Leslie Hoffman, Maricopa County

Health

Alberto Peshlakai, Navajo County
Public Health & Healthy Communities
Subcomm., Vice Chair
Hildy Angius, Mohave County

Transportation

Alton Shepherd, Apache County
Jeronimo Vasquez, Coconino County
Tim Humphrey, Gila County
Jack Sellers, Maricopa County
Fern Benally, Navajo County
Daryl Seymore, Navajo County
Bruce Bracker, Santa Cruz County