



A research and advocacy association, supporting efficient, responsive county government in Arizona.



In the December 2, 2016, CSA Weekly Update:

- [Former AZ Rural Lawmaker Gus Arzberger Passes Away at age 95](#)
- [Supervisor Whiting Talks Importance of Energy Sector in Navajo County](#)
- [House Ad Hoc Committee on Use Fuel Taxes Holds 1st Meeting](#)
- [Peace Officer Employment Study Committee](#)
- [House & Senate Committee Membership Finalized](#)
- [October JLBC Monthly Fiscal Highlights](#)
- [This Week in Arizona History...](#)
- [Interim Committee Agendas](#)
- [Calendar](#)

Former AZ Rural Lawmaker Gus Arzberger Passes Away at age 95

Former Arizona state legislator Gus Arzberger of Willcox passed away on November 25, 2016, at the age of 95.

Senator Arzberger served 16 years in the Arizona State Senate. He was married to Marsha Arzberger, also a former state legislator.

On behalf of all of us at CSA, we wish the entire Arzberger family our deepest sympathies.



[Top](#)

Supervisor Whiting Talks Importance of Energy Sector in Navajo County



This week Navajo County Supervisor Jason Whiting testified before the Joint Legislative Review Committee on State Plans Relating to Carbon Dioxide Emissions from Existing Power Plants.

Supervisor Whiting described the historical importance of the energy sector to the local economy and expressed the fact that federal policies on the sector are having a direct, negative economic impact on the residents of Navajo County. He shared, "Coal plants have brought over 1,000 jobs to the region and Arizona Public Service (APS) specifically brought over 250 direct jobs and \$34,000,000 of payroll that started circulate in our local economy." Unfortunately recent federal policy changes are leading to job losses in this sector (particularly related to the Cholla Power Plant in Joseph City) and revenue reductions in Navajo County and the surrounding region. Supervisor Whiting went on to note, "Colleagues ask me all the time why I have such a hard time with our federal government and its overreach, as if it is a myth, but I hope I have helped everyone to better understand why rural Arizona, and specifically Navajo County, is so passionate about government overreach and it's negative impacts on our communities."

Presentations from other individuals and organizations included, the Arizona Corporation Commission, the Office of the Arizona Attorney General, the Arizona Department of Environmental Quality (ADEQ), APS, and the Salt River Project.

The committee is tasked with reviewing the plan proposed by ADEQ regarding carbon dioxide emissions from power plants in Arizona, due to an Environmental Protection Agency requirement. The Committee is required to

review the plan based on the factors it developed, take public comment, and consider whether submission of the plan is in the public interest.

The committee was co-chaired by Senator Gail Griffin and Representative Frank Pratt. Other members included Senator Judy Burges, Senator Barbara McGuire, Representative Rusty Bowers and Representative Ken Clark.

[Top](#)

House Ad Hoc Committee on Use Fuel Taxes Holds 1st Meeting

On Thursday morning, December 1, the House Ad Hoc Committee on Use Fuel Taxes held their introductory meeting.

The purpose of the Ad Hoc Committee is to study the impact of the current use fuel tax structure on industries and commerce in Arizona, including heavy and light weight commercial vehicles, petroleum distributors and petroleum retailers; and review the potential benefits and potential problems with changing the current two tier use fuel tax structure to a one tier structure. Use fuel taxes make up 14 – 15 percent of the Highway User Revenue Fund (HURF).



Bill Fathauer, Government Relations Specials at the Arizona Department of Transportation (ADOT), provided the committee with a presentation on the history of the state's two-tiered tax system with regards to diesel fuel rates at the pump. Lighter vehicles pay 18 cents per gallon and heavier vehicles, with more than two axels, weighing over 26,000 pounds, pay a rate of 26 cents per gallon. According to Fathauer, Arizona is the only state in the nation who has the two-tiered model which was adopted to make up for any lost revenue when the state eliminated the weight distance tax many years ago.

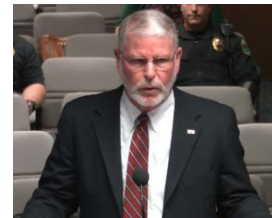
The committee plans to meet again sometime before the end of December.

Committee members include: Representative Rusty Bowers, Chairman; Senator-Elect Karen Fann; Representative Richard Andrade; Mark Ellery; Ron Guerra; Troy Little; Ray Painter; Lawrence Schmieder; and David Sellers.

[Top](#)

Peace Officer Employment Study Committee

The Peace Officer Employment Study Committee met on November 21 to continue their discussion of police officer recruitment, retention and training. During the hearing, Jack Lane (pictured), Executive Director of the Arizona Peace Officer Standards and Training Board (AZPOST), testified regarding Arizona's initial and in-service training requirements for law enforcement personnel. Mr. Lane said that due to budget cuts, AZPOST was short-staffed, resulting in fewer training materials produced.



Mr. Lane also testified about the problems incurred when smaller, rural law enforcement agencies cannot pay officers and deputies as much as larger, urban agencies. Oftentimes, the smaller agencies become the "training grounds" for junior officers, who then move to larger agencies with higher pay and benefits. Mr. Lane said that good leadership, improvements to morale and collaboration with line officers who perform the bulk of day-to-day policing could help stem the tide.

The next meeting of the Peace Officer Employment Study Committee will be December 7 at 10 a.m.

[Top](#)

House & Senate Committee Membership Finalized

Senate Committees

Appropriations	Health and Human Services
Sen. Debbie Lesko (R) – Chair	Sen. Nancy Barto (R) – Chair
Sen. John Kavanagh (R) – Vice Chair	Sen. Kate Brophy McGee (R) – Vice Chair
Sen. Sylvia Allen (R)	Sen. Debbie Lesko (R)
Sen. Steve Montenegro (R)	Sen. Steve Montenegro (R)
Sen. Warren Petersen (R)	Sen. Kimberly Yee (R)
Sen. Steve Smith (R)	Sen. David Bradley (D)
Sen. Olivia Cajero Bedford (D)	Sen. Katie Hobbs (D)

Sen. Steve Farley (D) Sen. Katie Hobbs (D) Sen. Martin Quezada (D)	
Commerce and Public Safety Sen. Steve Smith (R) – Chair Sen. Warren Petersen (R) – Vice Chair Sen. Sonny Borrelli (R) Sen. David Farnsworth (R) Sen. Bob Worsley (R) Sen. Sean Bowie (D) Sen. Robert Meza (D) Sen. Catherine Miranda (D)	Judiciary Sen. Judy Burges (R) – Chair Sen. Nancy Barto (R) – Vice Chair Sen. Frank Pratt (R) Sen. Bob Worsley (R) Sen. Lupe Contreras (D) Sen. Andrea Dalessandro (D) Sen. Martin Quezada (D)
Education Sen. Sylvia Allen (R) – Chair Sen. Steve Montenegro (R) – Vice Chair Sen. Kate Brophy McGee (R) Sen. Steve Smith (R) Sen. Kimberly Yee (R) Sen. David Bradley (D) Sen. Catherine Miranda (D)	Natural Resources, Energy and Water Sen. Gail Griffin (R) – Chair Sen. Frank Pratt (R) – Vice Chair Sen. Sylvia Allen (R) Sen. Judy Burges (R) Sen. Karen Fann (R) Sen. Andrea Dalessandro (D) Sen. Lisa Otondo (D) Sen. Jamescita Peshlakai (D)
Finance Sen. David Farnsworth (R) – Chair Sen. Karen Fann (R) – Vice Chair Sen. Sonny Borrelli (R) Sen. Warren Petersen (R) Sen. Sean Bowie (D) Sen. Olivia Cajero Bedford (D) Sen. Steve Farley (D)	Rules President Steve Yarbrough (R) – Chair Sen. Kimberly Yee (R) – Vice Chair Sen. Gail Griffin (R) Sen. Debbie Lesko (R) Sen. Olivia Cajero Bedford (D) Sen. Katie Hobbs (D) Sen. Martin Quezada (D)
Government Sen. John Kavanagh (R) – Chair Sen. Sonny Borrelli (R) – Vice Chair Sen. David Farnsworth (R) Sen. Gail Griffin (R) Sen. Lupe Contreras (D) Sen. Juan Mendez (D) Sen. Robert Meza (D)	Transportation and Technology Sen. Bob Worsley (R) – Chair Sen. Karen Fann (R) – Vice Chair Sen. Kate Brophy McGee (R) Sen. Frank Pratt (R) Sen. Juan Mendez (D) Sen. Lisa Otondo (D) Sen. Jamescita Peshlakai (D)

House Committees

Committee on Rules Rep. Phil Lovas (R), Chair Rep. Paul Boyer (R), Vice Chair Rep. John Allen (R) Rep. Eddie Farnsworth (R) Rep. T.J. Shope (R) Rep. Kelly Townsend (R) Rep. Wenona Benally (D) Rep. Diego Espinoza (D) Rep. Rebecca Rios (D)	Committee on Energy, Environment & Natural Resources Rep. Rusty Bowers (R), Chair Rep. Brenda Barton (R), Vice Chair Rep. David Cook (R) Rep. Vince Leach (R) Rep. Paul Mosley (R) Rep. Michelle Udall (R) Rep. Eric Frank Descheenie (D) Rep. Kirsten Engel (D) Rep. Sally Ann Gonzales (D)	Committee on Appropriations Rep. Don Shooter (R), Chair Rep. David Livingston (R), Vice Chair Rep. Rusty Bowers (R) Rep. Heather Carter (R) Rep. Regina Cobb (R) Rep. Vince Leach (R) Rep. Jill Norgaard (R) Rep. Tony Rivero (R) Rep. Michelle Ugenti-Rita (R) Rep. Lela Alston (D) Rep. Mark Cardenas (D) Rep. Ken Clark (D) Rep. Charlene Fernandez (D) Rep. Randall Friese (D)
Committee on Banking & Insurance Rep. David Livingston (R), Chair Rep. Eddie Farnsworth (R), Vice Chair Rep. Phil Lovas (R) Rep. Paul Mosley (R) Rep. Jeff Weninger (R) Rep. Kelli Butler (D) Rep. Pamela Powers Hannley (D) Rep. Athena Salman (D)	Committee on Ways & Means Rep. Michelle Ugenti-Rita (R), Chair Rep. Vince Leach (R), Vice Chair Rep. Anthony Kern (R) Rep. Jay Lawrence (R) Rep. Kevin Payne (R) Rep. Jeff Weninger (R) Rep. Reginald Bolding (D) Rep. Mark Cardenas (D) Rep. Denise "Mitzi" Epstein (D)	Sub-Committee on Appropriations—Education Rep. Jill Norgaard (R), Chair Rep. Heather Carter (R), Vice Chair Rep. Lela Alston (D)

Committee on Military, Veterans & Regulatory Affairs Rep. Jay Lawrence (R), Chair Rep. Mark Finchem (R), Vice Chair Rep. Noel Campbell (R) Rep. Travis Grantham (R) Rep. Anthony Kern (R) Rep. Richard Andrade (D) Rep. Eric Frank Descheenie (D) Rep. Diego Espinoza (D) Rep. Ray Martinez (D)	Committee on Judiciary & Public Safety Rep. Eddie Farnsworth (R), Chair Rep. Anthony Kern (R), Vice Chair Rep. Paul Boyer (R) Rep. Mark Finchem (R) Rep. David Stringer (R) Rep. Maria Syms (R) Rep. Kirsten Engel (D) Rep. Sally Ann Gonzales (D) Rep. Daniel Hernandez, Jr. (D)	Sub-Committee on Appropriations—Health & Welfare Rep. Regina Cobb (R), Chair Rep. Tony Rivero (R), Vice Chair Rep. Randall Friese (D)
Committee on Commerce Rep. Jeff Weninger (R), Chair Rep. Jill Norgaard (R), Vice Chair Rep. Todd Clodfelter (R) Rep. Darin Mitchell (R) Rep. T.J. Shope (R) Rep. Maria Syms (R) Rep. Cesar Chavez (D) Rep. Diego Espinoza (D) Rep. Denise "Mitzl" Epstein (D)	Committee on Transportation & Infrastructure Rep. Noel Campbell (R), Chair Rep. Drew John (R), Vice Chair Rep. David Cook (R) Rep. Paul Mosley (R) Rep. Kevin Payne (R) Rep. Richard Andrade (D) Rep. Jesus Rubalcava (D) Rep. Macario Saldate (D)	Sub-Committee on Appropriations—Public Safety, Infrastructure & Resources Rep. Vince Leach (R), Chair Rep. David Livingston (R), Vice Chair Rep. Charlene Fernandez (D)
Committee on Education Rep. Paul Boyer (R), Chair Rep. Doug Coleman (R), Vice Chair Rep. Rusty Bowers (R) Rep. Jill Norgaard (R) Rep. Becky Nutt (R) Rep. Don Shooter (R) Rep. David Stringer (R) Rep. Michelle Udall (R) Rep. Lela Alston (D) Rep. Reginald Bolding (D) Rep. Macario Saldate (D)	Committee on Land, Agriculture & Rural Affairs Rep. Brenda Barton (R), Chair Rep. Darin Mitchell (R), Vice Chair Rep. David Cook (R) Rep. Travis Grantham (R) Rep. Becky Nutt (R) Rep. Wenona Benally (D) Rep. Rosanna Gabaldón (D) Rep. Jesus Rubalcava (D)	Joint Legislative Audit Committee Rep. Anthony Kern (R), Chair TBD
Committee on Government Rep. Doug Coleman (R), Chair Rep. Bob Thorpe (R), Vice Chair Rep. Todd Clodfelter (R) Rep. Drew John (R) Rep. Michelle Ugenti-Rita (R) Rep. Ken Clark (D) Rep. Ray Martinez Rep. Athena Salman (D)	Committee on Health Rep. Heather Carter (R), Chair Rep. Regina Cobb (R), Vice Chair Rep. Jay Lawrence (R) Rep. Tony Rivero (R) Rep. Maria Syms (R) Rep. Michelle Udall (R) Rep. Kelli Butler (D) Rep. Otoniel Navarrete (D) Rep. Pamela Powers Hannley (D)	Committee on Administration Rep. T.J. Shope (R), Chair TBD
Committee on Federalism, Property Rights & Public Policy Rep. Bob Thorpe (R), Chair Rep. Mark Finchem (R), Vice Chair Rep. Noel Campbell (R) Rep. Travis Grantham (R) Rep. Kevin Payne (R) Rep. David Stringer (R) Rep. Isela Blanc (D) Rep. Daniel Hernandez, Jr. (D) Rep. Otoniel Navarrete (D)	Committee on Local & International Affairs Rep. Tony Rivero (R), Chair Rep. Todd Clodfelter (R), Vice Chair Rep. Drew John (R) Rep. Becky Nutt (R) Rep. Isela Blanc (D) Rep. Cesar Chavez (D) Rep. Rosanna Gabaldón (D)	Committee on Ethics Rep. Eddie Farnsworth (R), Chair TBD

[Top](#)

October JLBC Monthly Fiscal Highlights

Last week, the Joint Legislative Budget Committee (JLBC) produced their Monthly Fiscal Highlights for October 2016 announcing General Fund revenues of \$740.8 million. This represents an increase of 2.3% compared to October 2015 figures. Year-to-date (YTD) General Fund revenue is \$56.9 million above budget forecast, a 1.9% surplus. Strong sales tax (up 3.5% YTD) and individual income tax (up 6.9% YTD) collections are the primary drivers of growth over prior year which is enough to overcome a (34.5)% decline in YTD corporate income tax numbers.

JLBC cited a few factors responsible for the positive individual income tax performance:

- Withholding revenues grew 13.5% over the same month last year, 8.4% YTD over prior year, due to (1) underreported receipts from July to March of FY 2016 by the Arizona Department of Revenue and (2) the State's 3% employment growth over the past year.
- Smaller than expected refunds due in part to delays in processing returns for taxpayers that received extensions for 2015.

Highway User Revenue Fund (HURF) collections of \$115.3 million in October are 4.6% higher than October of last year and \$5.2 million above the October forecast. YTD collections are up 4.4% over last year.

General Fund spending totaled \$699.9 million in October with YTD spending of \$4.32 billion, a (\$298.1) million decrease from this time last fiscal year. Most of this perceived decline comes from (1) the fact that AHCCCS now administers the state's Medicaid Behavioral Health program eliminating the need for a (\$449.3) million transfer to the Department of Health Services and (2) a technical timing issue relating to the universities' rollover repayment made in July of FY 2016.

[Top](#)

This Week in Arizona History...

On November 30, 1915, Walnut Canyon was made a National Monument by a Presidential Proclamation from President Woodrow Wilson.

Located about 10 miles southeast of downtown Flagstaff, Walnut Canyon National Monument is home to hiking trails with diverse plant and animal life. The remains of 25 cliff dwelling rooms, constructed by the Sinagua, a pre-Columbian culture, can be found along the trail to the bottom of the canyon.



To learn more about Walnut Canyon, please [click here](#).

[Top](#)

Interim Committee Agendas

- [The Senate Health and Human Services and House Health Committee of Reference](#) will meet on Tuesday, December 6, 2016 at 9:00 a.m. in Senate Hearing Room 109.
- [The Senate Commerce and Workforce Development and House Agriculture, Water and Lands Committee of Reference](#) will meet on Tuesday, December 6, 2016 at 10:00 a.m. in Senate Hearing Room 1.
- [The Senate Commerce and Workforce Development and House Insurance Committee of Reference](#) will meet on Tuesday, December 6, 2016 at 10:30 a.m. in Senate Hearing Room 1.
- [The Surface Transportation Funding Task Force](#) will meet on Wednesday, December 7, 2016 at 9:00 a.m. in Senate Hearing Room 1.
- [The Study Committee on Incompetent, Nonrestorable and Dangerous Defendants](#) will meet on Thursday December 8, 2016 at 1:00 p.m. in Senate Hearing Room 1.
- [The Senate Appropriations and House Government and Higher Education Committee of Reference](#) will meet on Thursday, December 8, 2016 at 2:00 p.m. in Senate Hearing Room 109.

For a complete list of updated agendas, please [click here](#).

[Top](#)



County Supervisors Association of Arizona

1905 W. Washington, Suite 100
Phoenix, Arizona 85009

www.countysupervisors.org

[Leadership](#) / [Research](#) / [Advocacy](#) / [Newsletter](#) / [Speakers](#) / [Counties](#) / [Alliances](#) / [Calendar](#) / [Contact](#)

To remove your name from our mailing list, please [click here](#).

Questions or comments? Email us at csaupdate@countysupervisors.org or call us at 602-252-5521.